



Οδηγός Χρήσης MATLAB Installation

Υπηρεσία Πληροφορικών Συστημάτων
ΥΠΣ-ΕΔ/22
17-11-2010



Contents

Installing MathWorks Software on Client Systems	3
1. Before You Install	3
2. Start the Installer	4
3. Choose Whether to Install Using the Internet	4
4. Review the Software License Agreement	5
5. Enter File Installation Key	6
6. Specify the Type of Installation	6
7. Specify the Installation Folder	7
8. Specify Products to Install	8
9. Specify the Location of the License File	9
10. Specify Installation Options (Custom Only)	10
11. Confirm Your Choices	12
12. Complete the Installation	14



Installing MathWorks Software on Client Systems

1. Before You Install

Get required installation and licensing information from your license administrator. This includes:

- Client installations must use the License File (license.dat) that was processed during installation of the license manager on your server. The installer adds information to the License File during installation that clients need. You will also need a File Installation Key(FILE-INSTALLATION-KEY.txt). Ask your license administrator for details.
- Make sure you have the correct permissions to perform the installation. If you have questions about this, ask your system administrator.

Note While you use an administrator account or root privileges to install the software, you typically do not want to activate the software for a privileged user. Specify the non-privileged end user who will use the software when you activate it. Running MATLAB as a user with administrator privileges or root privileges is not recommended.

- 📄 **Windows Systems** — Get the name and password of the administrator account on your computer. The installer modifies the system registry during installation.
- Consider disabling virus checking software and Internet security applications on your system for the duration of the installation process. These applications can slow down or cause the installation process to appear to become unresponsive (hang).

If You Are Upgrading an Existing Installation

If you are upgrading your MATLAB installation to the latest release, MathWorks recommends that you install the new version in a new installation folder. This is recommended when upgrading an installation of a prerelease version of the software as well. You do not need to delete an existing MATLAB installation before installing this release. You can run multiple versions of MATLAB on the same system.



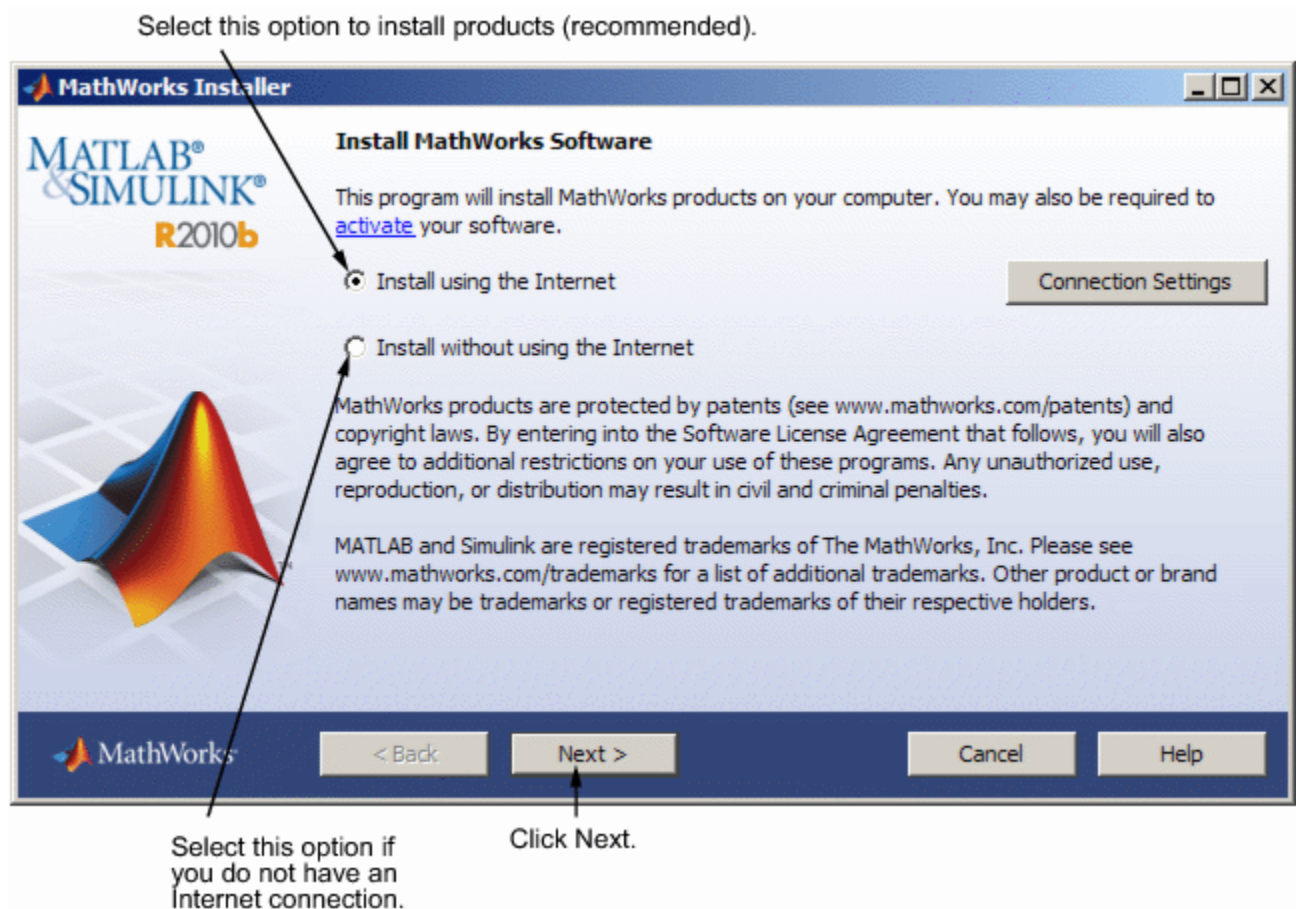
2. Start the Installer

The method you use to start the installer, depends on your platform.

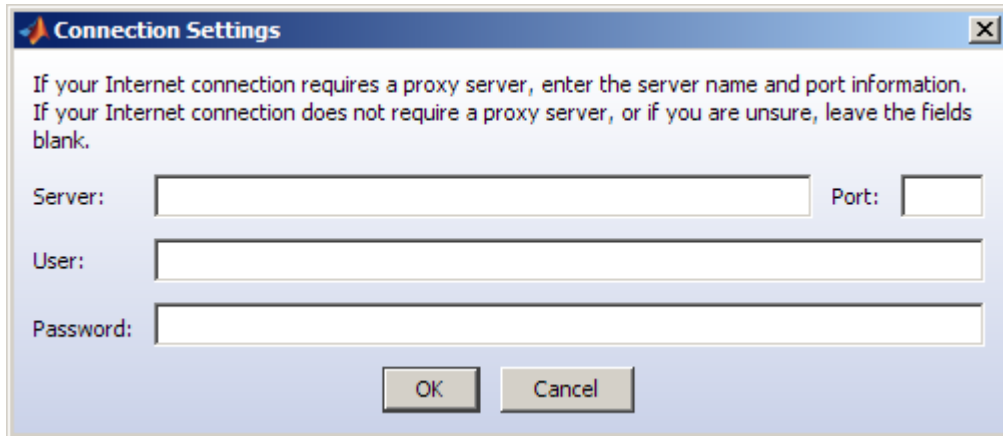
- **Windows Systems** — Insert the DVD into the DVD drive connected to your system or double-click the installer file you downloaded from the MathWorks Web site. The installer should start automatically.

3. Choose Whether to Install Using the Internet

Choose whether you want to install using an Internet connection or without using an Internet connection. If you are connected to the Internet, leave the **Install using the Internet** option selected (the default) and click **Next**.



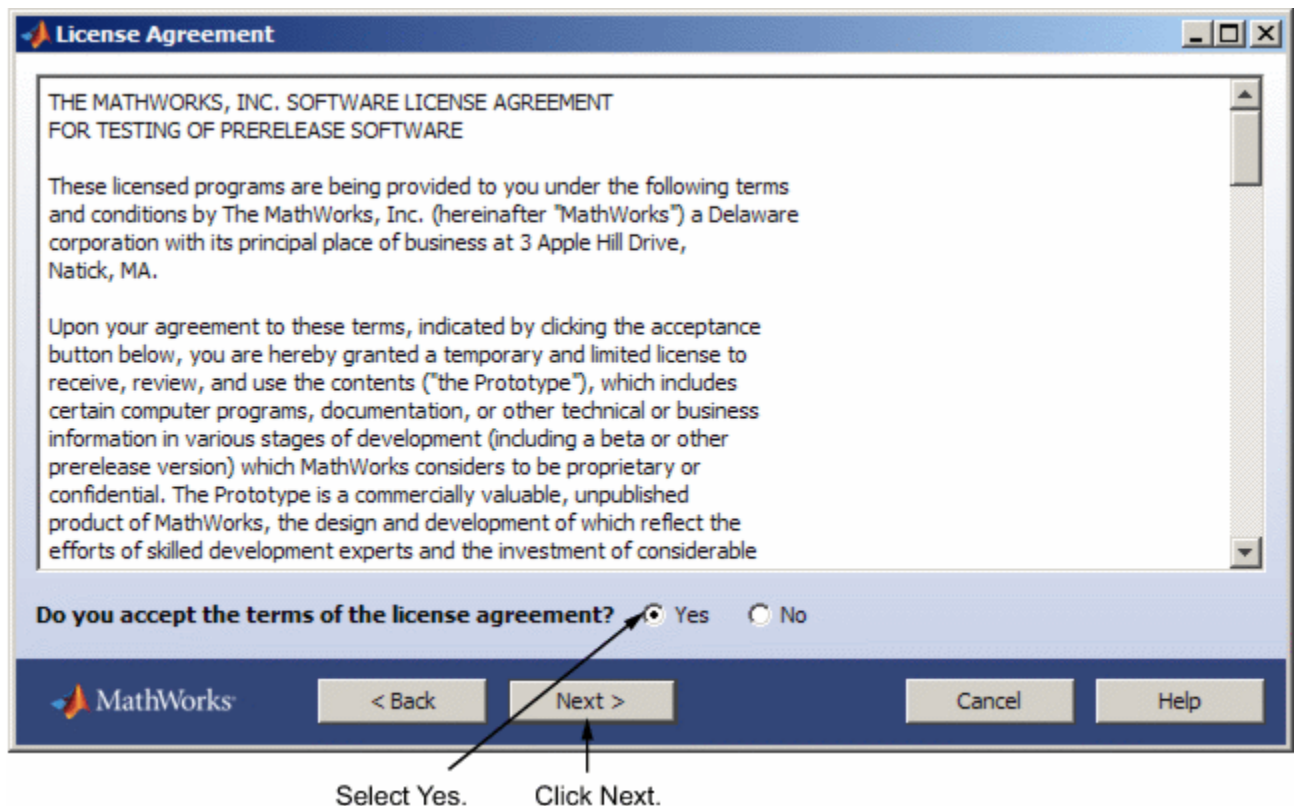
If your Internet connection requires a proxy server, click the **Connection Settings** button. You can enter the server name, port, and password in the Connection Settings dialog box. MathWorks supports several types of proxy configurations: Basic authentication and Digest authentication.



4. Review the Software License Agreement

Review the software license agreement and, if you agree with the terms, select **Yes** and click **Next**.

After the installation is complete, you can view or print the license agreement using the file license.txt located in the top-level installation folder.





5. Enter File Installation Key

If you have a File Installation Key, select the **Provide File Installation Key** option and enter your key. A *File Installation Key* identifies the products you can install. The administrator on a license can retrieve the File Installation Key from the License Center at the MathWorks Web site. If you specify a File Installation Key, the installer skips the license selection step.

If you have an account, enter your e-mail address and password.

Provide Installation Information

Provide your installation information

Log in to my MathWorks Account:

E-mail address:

Password:

[Forgot your password?](#)

I need to create an Account (requires an Activation Key)

Provide File Installation Key

You may have received a File Installation Key from the MathWorks Web site or from your license administrator.

MathWorks

< Back Next > Cancel Help

If you need to create an account, select this option.

Click Next.

If you have a File Installation Key, enter it here.

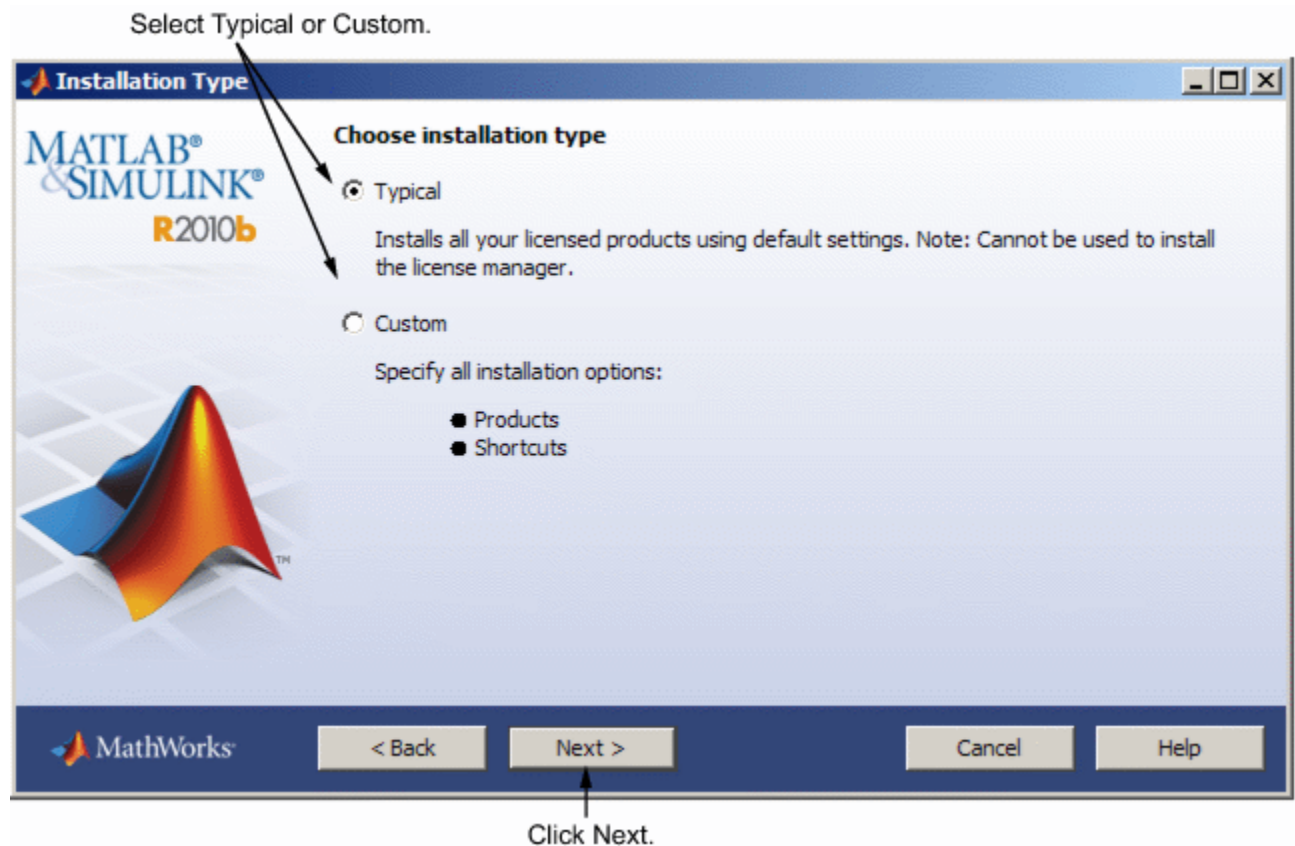
6. Specify the Type of Installation

Note In a client installation, you can pick the Typical option because the license manager is not preselected for installation.

In the Installation Type dialog box, specify whether you want to perform a Typical or Custom installation and click **Next**.



- Choose **Typical** if you have an Individual or Group license and do not need to specify which products you want to install and do not need to access any installation options.
- Choose **Custom** if you need to specify which products to install, need access to installation options, or need to install the license manager (network license options only).

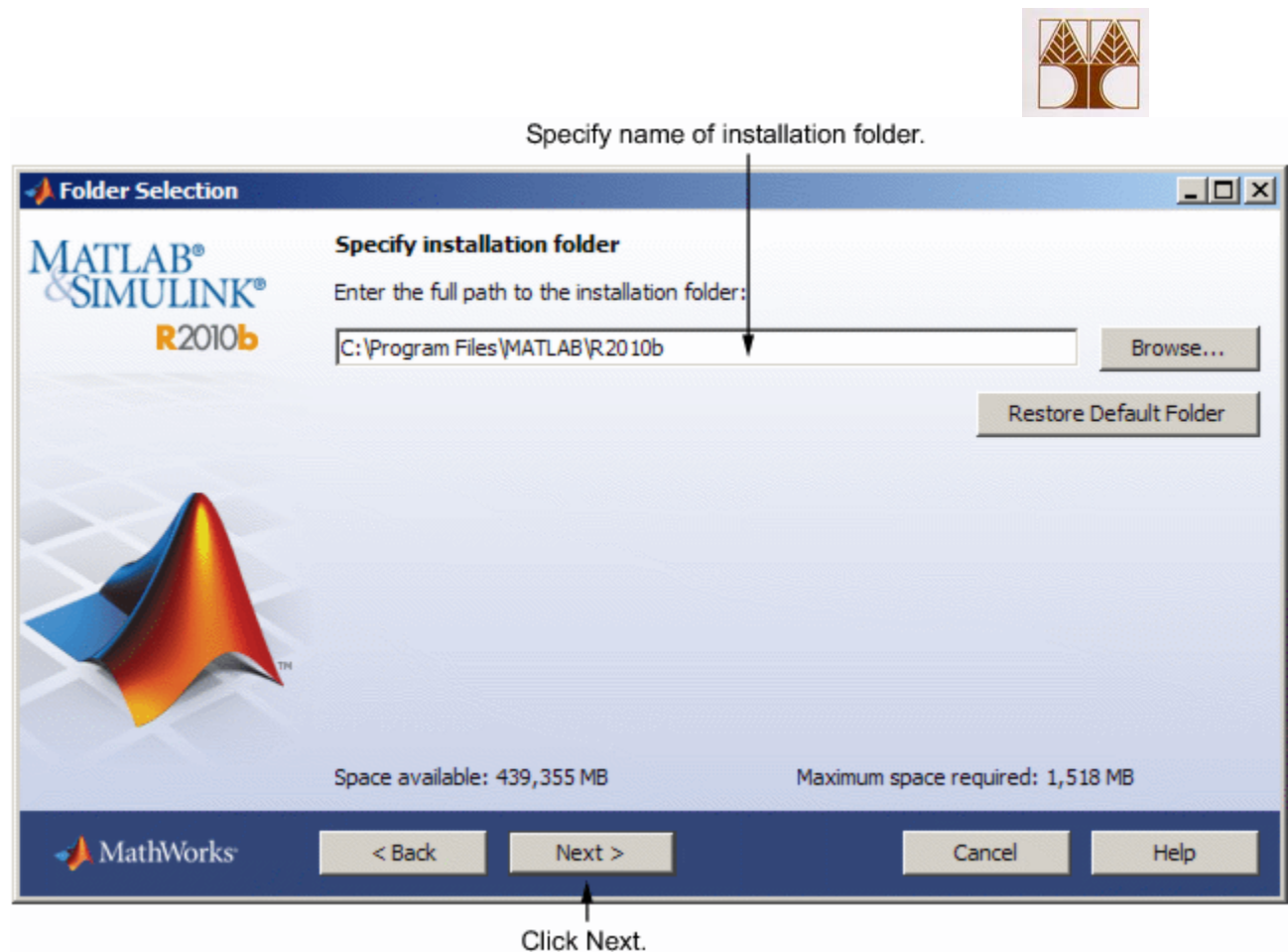


If you choose a Typical installation, the installer skips the product selection and installation options steps.

7. Specify the Installation Folder

Specify the name of the folder where you want to install MathWorks products. Accept the default installation folder or click **Browse** to select a different one. If the folder doesn't exist, the installer creates it.

When specifying a folder name, you can use any alphanumeric character and some special characters, such as underscores. The installer will tell you if the name you specified includes any characters that are not permitted in file names. If you make a mistake while entering a folder name and want to start over, click **Restore Default Folder**. After making your selection, click **Next**.



8. Specify Products to Install

If you chose a custom installation, you can specify which products you want to install in the Product Selection dialog box. This dialog box lists all the products you are licensed to install. The products in the list are preselected for installation.

Note Do not install the license manager on client systems.

After making your selections, click **Next** to proceed with the installation. After clicking **Next**, you might receive a message telling you that one or more of the products you selected depend on other products. See [Product Dependencies](#) for more information.



Do not select the license manager.

Product Selection

MATLAB® & SIMULINK® R2010b

Select products to install:

Product
<input type="checkbox"/> License Manager 11.6.1
<input checked="" type="checkbox"/> MATLAB 7.11
<input checked="" type="checkbox"/> Simulink 7.6
<input checked="" type="checkbox"/> Instrument Control Toolbox 2.11
<input checked="" type="checkbox"/> MATLAB Compiler 4.14
<input checked="" type="checkbox"/> Simscape 3.4
<input checked="" type="checkbox"/> Statistics Toolbox 7.4

Space available: 441,940 MB Space required: 699 MB

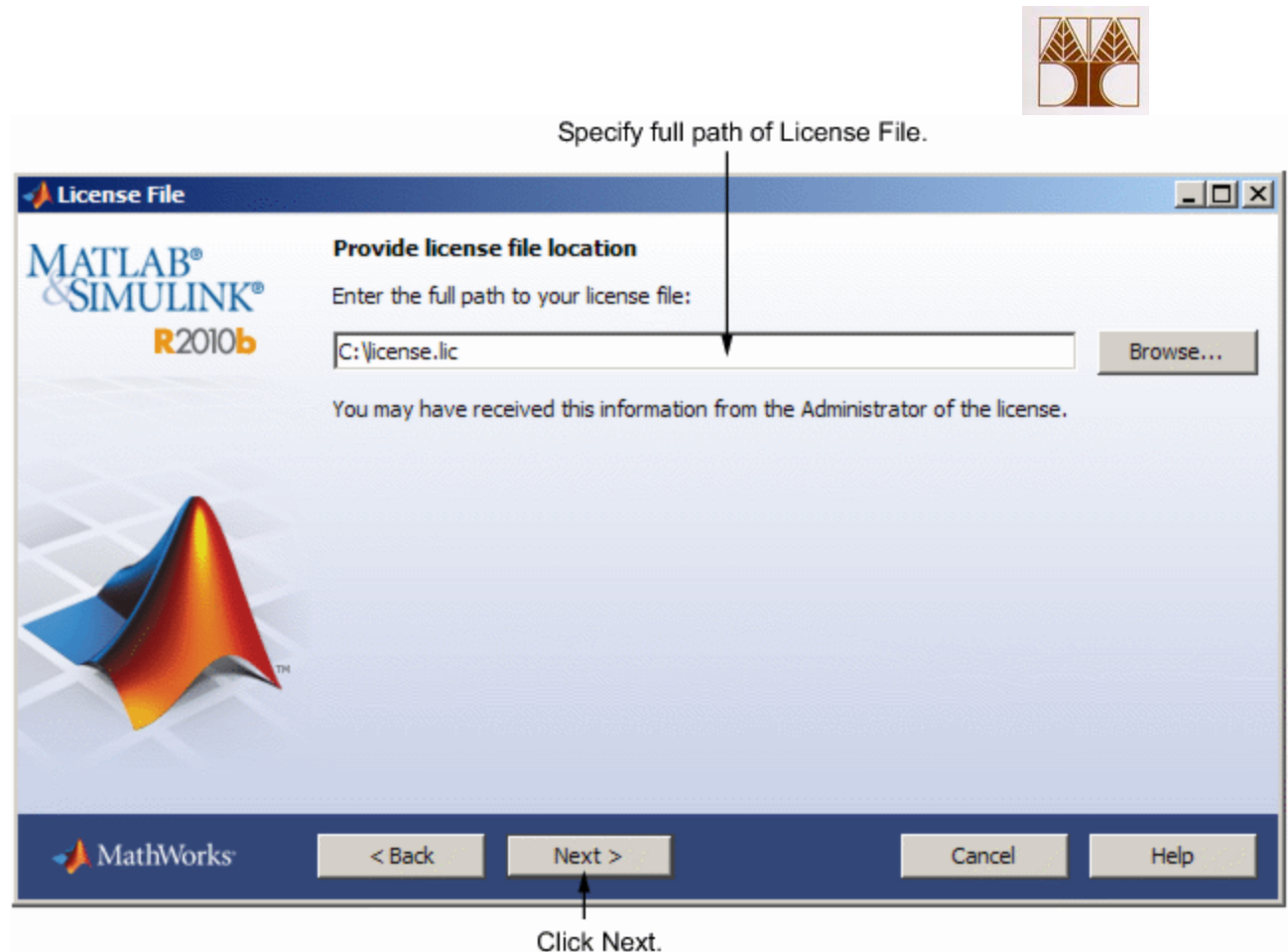
MathWorks < Back Next > Cancel Help

Make any product selections. Click Next.

9. Specify the Location of the License File

Enter the full path of your License File in the text box (or drag and drop the file) and click **Next**.

If you are installing MathWorks products on a client system in a network configuration, specify the License File that was processed by the installer when you installed the license manager on your server. During installation of the license manager, the installer adds server and daemon information to the License File, names it *license.dat*, and stores it in the *matlabroot/etc* folder, where *matlabroot* is your MATLAB installation folder.



License File Processing on Client

The installer performs the following processing of the License File on client systems:

- Creates a copy of the License File you specify, naming it network.lic, and puts the file in the \licenses folder in your MATLAB client installation folder.
- Deletes all the INCREMENT lines and the DAEMON line in the License File, leaving the SERVER line. Adds the statement USE_SERVER to the file.

10. Specify Installation Options (Custom Only)

For Custom installations, you can specify several installation options, depending on which platform you are installing.

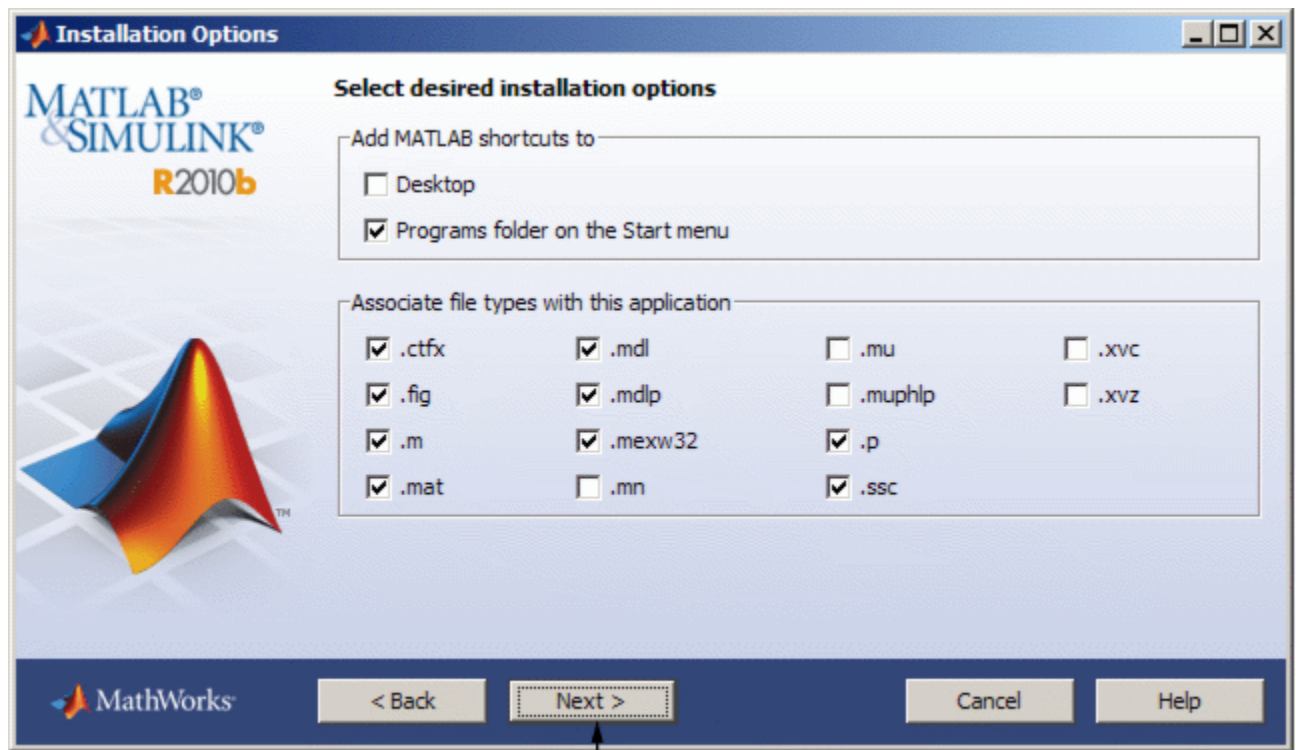
On Windows Systems

On Windows system, the Installation Options dialog box presents the following options:



- Determining whether the installer puts shortcuts for MATLAB software in the **Start** menu and on the desktop.
- Specifying which files the operating system associates with MATLAB, based on their file extension. The installer preselects the extensions associated with products you are installing.

After selecting installation options, click **Next** to proceed with the installation.



Click Next.

The following table provides brief descriptions of these file extensions.

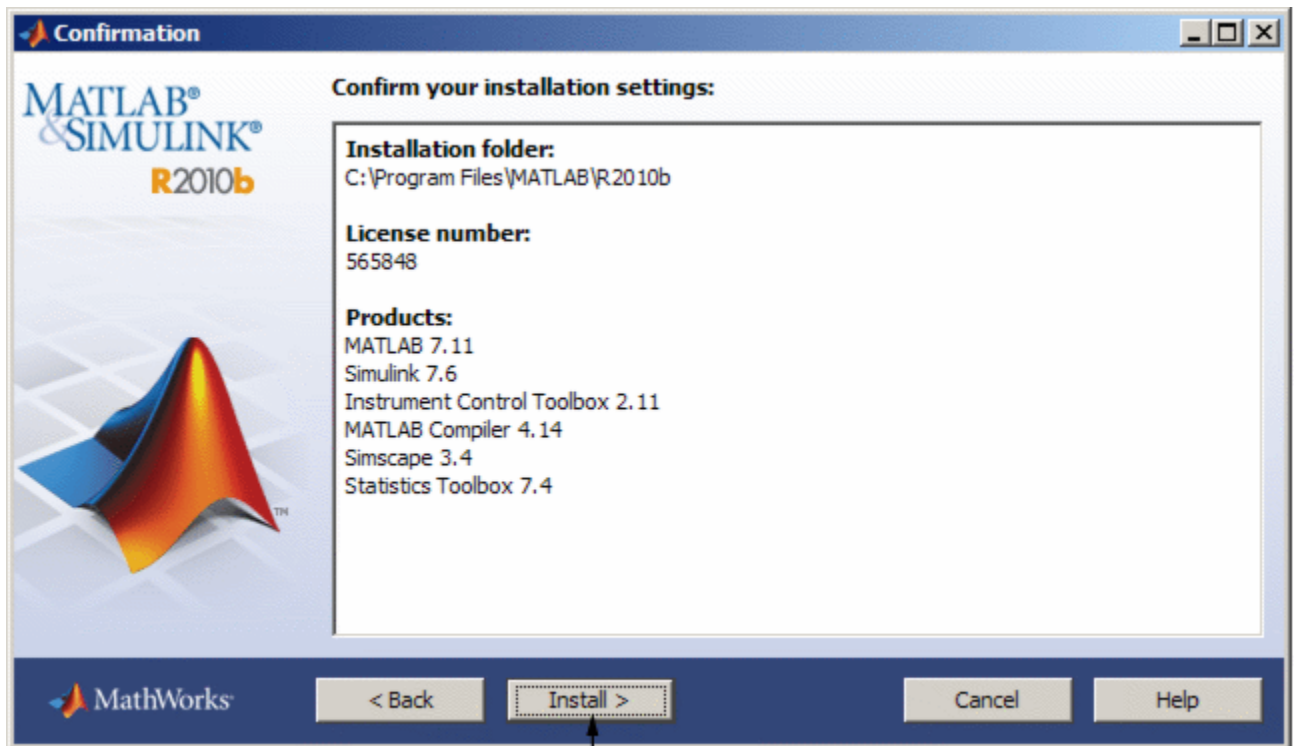
File Extension	Description
.ctfx	MATLAB Compiled Application
.fig	MATLAB Figure
.m	MATLAB Code
.mat	MATLAB Data
.mdl	Simulink Model



File Extension	Description
.mdl	Simulink Protected Model
.mex*	MATLAB MEX. This extension is platform specific: .mexw32 or .mexw64
.mn	MuPAD Notebook
.mu	MuPAD Code
.muphp	MuPAD Help
.p	MATLAB P-code
.ssc	Simscape Model
.xvc	MuPAD Graphics
.xvz	MuPAD Graphics

11. Confirm Your Choices

Before it begins copying files to your hard disk, the installer displays a summary of your installation choices. To change a setting, click **Back**. To proceed with the installation, click **Install**.



Click Install.

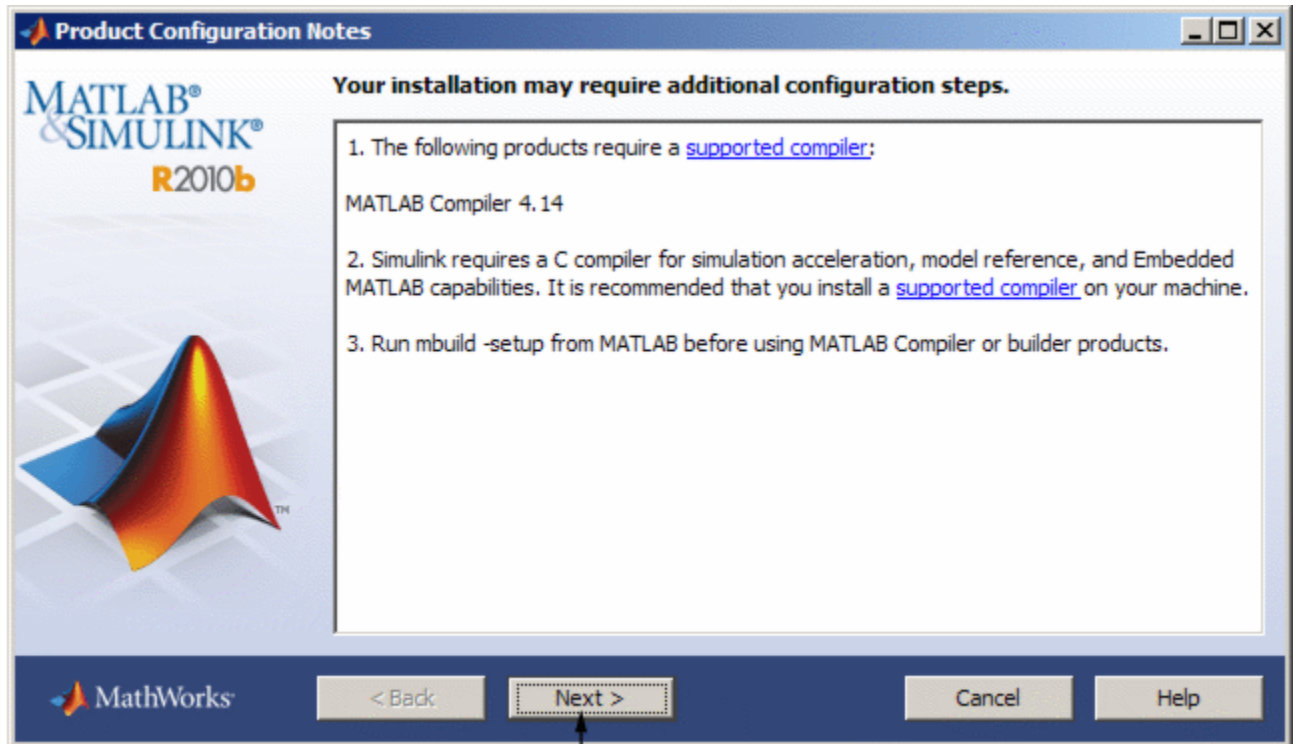
As it copies files to your hard drive, the installer displays a status dialog box to show the progress of the installation.

Read Product Configuration Notes

Depending upon which products you install, the installer might display a dialog box containing several types of information:

- **Product configuration information** — Certain products require additional configuration. If you installed one of these products, the installer lists the configuration commands in this dialog box. You can copy these command to your system clipboard for use after the installation is completed.
- **Available product updates** — If your license identifies products that are not on the DVD, and you are not currently connected to the Internet or you chose not to download product updates, the installer lists these products in this dialog box. After installation is complete, you can go to the MathWorks Web site to download these products.

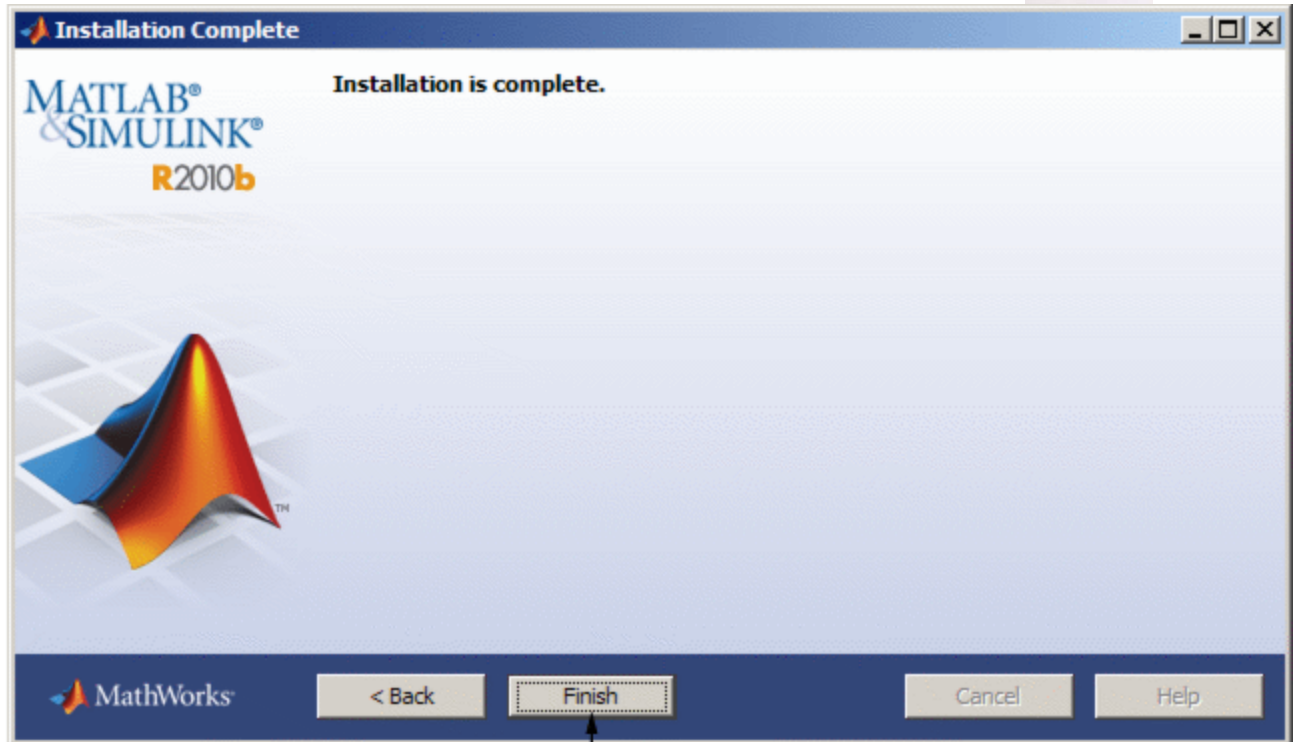
Click **Next** to proceed with the installation.



Click Next.

12. Complete the Installation

When the MathWorks installer finishes, it displays the Installation Complete dialog box. Click **Finish** to exit the installer.



Click Finish.